

Strengthening Socio-Emotional Competences of Career Practitioners

Co-funded by the
Erasmus+ Programme
of the European Union



PROJECT FOCUS

STRENGTH is an Erasmus+ project that aims at increasing the **social and emotional competence** in career counsellors. Social and emotional competences are abilities of great importance for career guidance and counselling, because they allow practitioners to address diverse challenges in an empathic and effective manner.

As a result, **STRENGTH** concerns career counsellors' ability to promote the social inclusion of their clients.

EXPECTED RESULTS

STRENGTH will develop:

- 1.** A toolkit with methods for developing social and emotional intelligence skills
- 2.** A handbook on training needs of Career Counselors
- 3.** A socio-emotional skills training program
- 4.** An innovative online platform and kit
- 5.** A guide for career counsellors and trainers to improve Social Intelligence Skills.

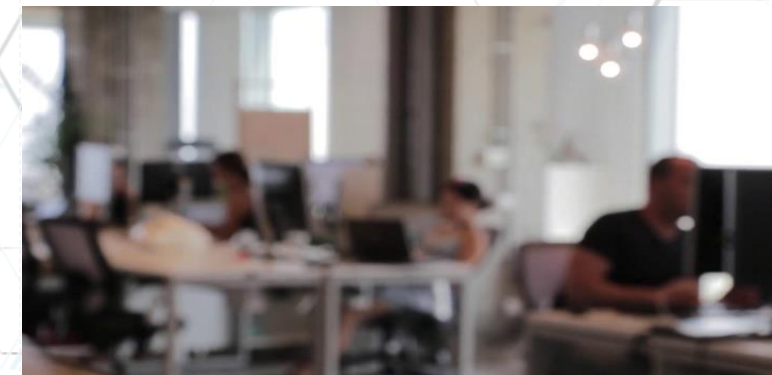
WHO IS IT FOR

Career counsellors & career guidance practitioners

Educational and training institutes, providing training to guidance practitioners

Policy makers, public and private stakeholders dealing with career guidance

All European citizens as potential beneficiaries of quality counselling and vocational guidance services.



www.projectstrength.net/

MAIN OBJECTIVES

The STRENGTH project will provide concrete solutions to train a new generation of socially aware career guidance professionals. This will be reached through the following objectives:

- ✓ Research and analysis on the definition and factors of social intelligence
- ✓ Exploration of training methodologies that can be adapted for the training of career guidance practitioners
- ✓ Development of innovative methods and tools that enable career guidance practitioners in being more effective
- ✓ Testing a learning program for guidance practitioners in the different countries, to support them in gaining and improve their social intelligence skills.

PROJECT CONSORTIUM



MINISTERUL EDUCAȚIEI ȘI CERCETĂRII

CENTRUL NAȚIONAL DE POLITICI
ȘI EVALUARE ÎN EDUCAȚIE



UNIÃO DAS FREGUESIAS
de Gondomar (S. Cosme), Valbom e Jovim

VISIT / FOLLOW US



www.projectstrength.net/

This project has been funded with support from the European Commission under the Erasmus+ Programme. This publication [communication] reflects the views only of the author, and the Commission cannot be held responsible for any use which may be made of the information contained therein.

PROJECT ID: 2019-1-RO01-KA202-063198

Strengthening Socio-Emotional Competences of Career Practitioners



www.projectstrength.net/

Co-funded by the
Erasmus+ Programme
of the European Union

